

# A New Species of *Sarcophaga* from California

(Contribution from the Department of Entomology of the Montana State  
College, Bozeman, Montana)

R. R. PARKER, BOZEMAN, MONTANA

*Sarcophaga californica*, n. sp.

Holotype, male, collection of writer.

*Male.* Head silvery gray pollinose; third antennal segment two to two and one-half times length of second; only third vein bristly; tibiae not bearded; submesotibial bristle present; anterior ventral row of bristles of middle femur present on proximal half only; anterior acrostichals very weak, only anterior pairs at all distinct; three pairs posterior dorsocentrals; marginal bristles absent on second and third abdominal segments; vestiture of third ventral plate erect; fourth ventral plate similar to that of *S. kellyi* Aldrich; genital segments dull orange; first with marginal bristles.

Length, 8 to 10 mm.

*Head.* Silvery gray pollinose except that front may be slightly brassy. Viewed from side parafrontals and genae with dark reflections. Breadth of front at narrowest part about one-half eye width; cheek height fully one-half that of eyes. Front prominent; frontal vitta twice width of each parafrontal at narrowest part of front, its sides parallel or but slightly converging backward and somewhat effaced below cellar triangle. Second antennal segment light colored at tip; third two or two and one-half times length of second; arista plumose to beyond middle. Back of head with three rows of black cilia behind eyes, otherwise clothed with white hair. Cheek vestiture black. Gena with irregularly placed bristles or bristle-like hairs on portion nearest eye; some may be present on transverse impression.

*Chetotaxy.* Lateral verticals absent; vibrissae inserted a little above line of oral margin; frontal rows of bristles extending below base of vitta and widely divergent, only posterior pair strongly directed backward.

*Thorax.* Metanotum clothed with short, reclinate bristles. Hairs covering anterior spiracle dark at base; those of anterior margin of posterior spiracle dark, those of spiracular cover light at tips. Epaulets dark.

*Wings.* Bend of fourth vein slightly less than a right angle; anterior cross-vein distinctly more basal than end of first longitudinal; third vein bristly; costal spine vestigial; section III of costa longer than section V; calypters whitish, fringed with white hair, posterior calypter large.

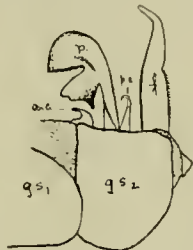
*Legs.* Dark. Posterior femur clothed beneath with long hair that forms a beard posteriorly; anterior face with three rows of bristles, the intermediate row weak, bristles of lower row rather slender and obscured by the hairy vestiture beneath; posterior ventral row of bristles absent; tibia with long vestiture beneath but not breaded, with a single bristle on the distal portion of the anterior ventral face. Anterior ventral row of bristles of middle femur present on proximal half only, posterior ventral row represented by "comb" with a few bristles on distal half and with long hair proximally; submesotibial bristle present.

*Chatotaxy.* Three pairs anterior dorsocentrals, the two hind pairs as strong as the anterior pair of postsuturals; anterior acrostichals very weak, scarcely differentiated from vestiture of prascutum, only the anterior pair at all noticeable; inner presuturals absent; three pairs posterior dorsocentrals; prescutellar acrostichals present; scutellar apicals present; three sternopleurals; lower sternopleura with bristles only.

*Abdomen.* Nota clothed above with short, reclinate bristles, beneath with longer more erect hair. Vestiture of ventral plates erect throughout; fourth ventral plate similar to that of *S. kellyi* Aldrich.

*Chatotaxy.* Second and third segments without marginal bristles, third with two or three laterals.

*Genital Segments.* Dull orange. First, faintly whitish pollinose, in profile slightly convex, vestiture very short dorsally, marginal bristles present (three or four on each side of center); second, rotund, anal area small, anterior portion with numerous bristles, posterior with bristle-like hairs. Forceps, in profile notched beyond middle; basal portion dull orange, its vestiture shorter than that of second segment; beyond notch the tips blackish, curved forward, stout and but little attenuated.



*Genitalia.* See figure. Forceps (f.), anterior claspers (a.c.), posterior claspers (p.c.), penis (p.), first and second genital segments (g.s. 1 and 2).

Described from three male specimens.

*Range.* All three specimens were taken at Del Rey, California, by Dr. Nathan Banks. There are no date labels.